



M32 & M60

MANUAL DE UTILIZARE
USER MANUAL

RO / EN



MULTUMIM!

THANK YOU!

RO Multumim ca ati ales M32 & M60 ca aliatul vostru in bataliile digitale!

Pentru a va bucura de cea mai buna performanta in gaming, va sugeram sa instalati software-ul inclus.

Actualizarile viitoare vor fi disponibile pe site-ul nostru, WWW.AQIRYS.COM

#SOLID #SMOOTH #FAST #ELEMENTAL

Welcome to the feel of AQIRYS®!

EN Thank you for choosing M32 & M60 as your ally in digital battles!

For the best gaming performance, we strongly recommend installing the included software.

Future updates will be available on our website, WWW.AQIRYS.COM

#SOLID #SMOOTH #FAST #ELEMENTAL

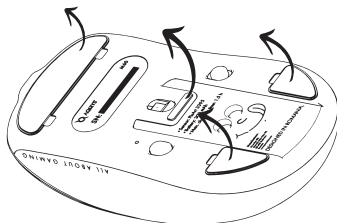
Welcome to the feel of AQIRYS®!



CUPRINS

SUMMARY

Specificatii Tehnice / Technical Specifications.....	1-2
Continut Pachet / Packing List.....	2
Prezentare / Overview	3-4
Conectarea Mouse-ului Wireless / Wireless Mouse Connection.....	5-6
Conectarea Mouse-ului cu fir / Wired Mouse Connection.....	7
Iluminarea RGB Dock / Dock RGB Illumination.....	8
Nivelul Bateriei / Battery Level.....	8
Incarcarea Bateriei / Battery Charging.....	8
Recomandari / Recommendation.....	9
Inlocuirea patinelor / Skates replacement.....	9
Atentionari / Warnings.....	10
Reglementari / Regulatory.....	11-12
Suport / Support.....	13

**ATENȚIE!****ATTENTION!****RO**

Va rugam sa indepartati folia de protectie a patinelor inainte de a incepe sa utilizati mouse-ul.

EN

Please, remove the skates' protecting film before starting using the mouse.

Specificatii Mouse M32**M32 Mouse Specifications**

Distanța operare	8 - 10 m
Senzor	PixArt 3311
Sensibilitate	12000 DPI
Polling rate	1000 Hz
Viteza maxima	300 ips
Acceleratie maxima	35 G
Accelerare hardware	Nu
Contacte butoane	Huano (20 mil. apasari)
Potentiometru scroll	Kailh GE 2.0
Greutate	58 g
Baterie	300 mAh

Operating distance	8 - 10 m
Sensor	PixArt 3311
Sensitivity	12000 DPI
Polling rate	1000 Hz
Max. tracking speed	300 ips
Max. acceleration	35 G
Hardware acceleration	Nu
Buttons switch	Huano (20 mil. apasari)
Scroll encoder	Kailh GE 2.0
Weight	58 g
Battery	300 mAh

Specificatii Transmisor Wireless M32**M32 Wireless Receiver Specifications**

Conectare	USB 2.0
Distanța operare	10 m
Voltaj functionare	5V
Curent functionare	14 - 27 mA

Interface	USB 2.0
Transmission Range	10 m
Operating voltage	5V
Operating current	14 - 27 mA

**Specificatii Mouse M60**

Distanta operare	8 - 10 m
Senzor	PixArt 3395
Sensibilitate	26000 DPI
Polling rate	4000 Hz
Viteza maxima	650 ips
Acceleratie maxima	50 G
Accelerare hardware	Nu
Contacte butoane	Kailh GM 8.0 (80 mil.)
Potentiometru scroll	Kailh GE 2.0
Greutate	58 g
Baterie	300 mAh

M60 Mouse Specifications

Operating distance	8 - 10 m
Sensor	PixArt 3395
Sensitivity	26000 DPI
Polling rate	4000 Hz
Max. tracking speed	650 ips
Max. acceleration	50 G
Hardware acceleration	No
Buttons switch	Kailh GM 8.0 (80 mil.)
Scroll encoder	Kailh GE 2.0
Weight	58 g
Battery	300 mAh

Specificatii Transmisor Wireless M60

Conectare	USB Type-C la USB 2.0
Distanta operare	10 m
Voltaj functionare	5V
Curent functionare	14 - 27 mA

M60 Wireless Receiver Specifications

Interface	USB Type-C to USB 2.0
Transmission Range	10 m
Operating voltage	5V
Operating current	14 - 27 mA

Continut Pachet M32

1. Mouse Wireless
2. Dock incarcare cu porturi USB
3. Cablu Incarcare USB Type-C
4. Manual de Utilizare
5. Transmisor Wireless
6. Patine PTFE de rezerva

M32 Packing List

1. Wireless Mouse
2. Charging Dock with USB ports
3. USB Type-C charging cable
4. User Manual
5. Wireless Receiver
6. Spare PTFE skates

Continut Pachet M60

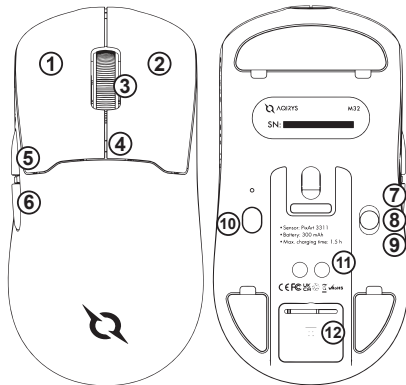
1. Mouse Wireless
2. Dock incarcare si transmisor wireless
3. Cablu Incarcare USB Type-C
4. Manual de Utilizare
5. Patine PTFE de rezerva

M60 Packing List

1. Wireless Mouse
2. Charging Dock and wireless receiver
3. USB Type-C charging cable
4. User Manual
5. Spare PTFE skates



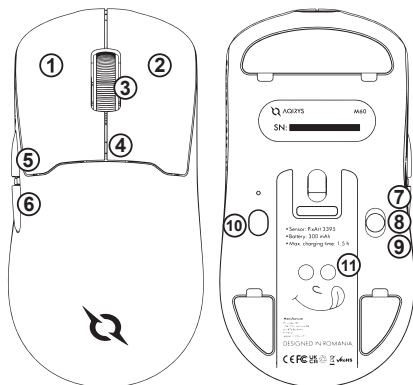
FRONT M32 BACK



RO

1. Buton Stanga
2. Buton Dreapta
3. Rotita Scroll
4. Led de Notificare DPI
5. Buton Lateral 1
6. Buton Lateral 2
7. Mod 2.4GHz
8. OFF
9. Mod Bluetooth
10. Buton DPI
11. Port Incarcare
12. Transmisor Wireless

FRONT M60 BACK



EN

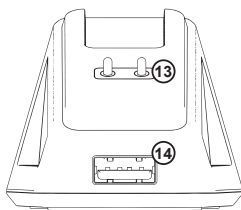
1. Left Button
2. Right Button
3. Scroll Wheel
4. DPI Notification Led
5. Side Button 1
6. Side Button 2
7. 2.4GHz Mode
8. OFF
9. Bluetooth Mode
10. DPI Button
11. Charging Port
12. Wireless Transmitter



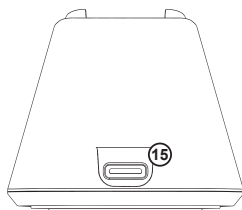
FRONT M60



FRONT M32



BACK



BOTTOM



RO

- 13. Pini de incarcare
- 14. Port USB
- 15. Port USB Type-C
- 16. Buton pentru iluminare

EN

- 13. Charging pins
- 14. USB Port
- 15. USB Type-C Port
- 16. Backlight Button



Conectarea Mouse-ului Wireless

Wireless Mouse Connection

RO

1. Initializarea mouse-ului:

- Porniti mouse-ul prin comutarea butonului din **pozitia 8 (OFF)** in **pozitia 7 (2.4GHz)** sau **pozitia 9 (BT)** pentru a selecta un mod de conectivitate.

2. Conectare Initiala:

- La prima utilizare, aveti optiunea de a conecta mouse-ul atat la un dispozitiv Bluetooth, cat si la transmitatorul wireless inclus in pachet

3. Conectarea la Dispozitiv Bluetooth:

- Asigurati-va ca functia Bluetooth a dispozitivului este activata.
- Cautati "AQIRYS M32 Mouse" sau "AQIRYS M60 Mouse" in lista de dispozitive Bluetooth din apropiere si selectati-l pentru a va conecta.
- Daca conexiunea este reusita, ledul de notificare va ilumina albastru.

4. Conectarea la un nou Dispozitiv Bluetooth:

- Tineti apasat timp de 3 secunde simultan butoanele 1, 2 si 3 pentru a intra in modul paring.
- Deschide setarile Bluetooth pe dispozitivul tau si cauta "AQIRYS M32 Mouse" sau "AQIRYS M60 Mouse" in lista de dispozitive disponibile.
- Selecteaza mouse-ul pentru conectare. Dupa ce s-a conectat, ledul de notificare va ilumina albastru.

5. Conectarea prin Modul 2.4 GHz:

- Pentru a realiza conexiunea prin modul 2.4 GHz, va rugam sa conectati transmitatorul 2.4 GHz, ce se afla la baza mouse-ului M32, la un port USB 2.0 disponibil pe dispozitivul dvs. sau puteti utiliza dock-ul inclus pentru a reduce distanta dintre receiver si mouse. In cazul mouse-ului M60 este necesar doar conectarea dock-ului de incarcare ce are si rol de transmitator.
- Dupa realizarea conexiunii, transmitatorul 2.4 GHz va intra automat in modul Pairing.
- In urma acestei actiuni, mouse-ul si transmitatorul 2.4 GHz se vor conecta automat, fapt confirmat de ledul de notificare ce va ilumina rosu.

6. Comutarea modurilor de conectare:

- Mutati butonul de selectare al mouse-ului din pozitia curenta in **pozitia 7** pentru conectarea prin 2.4GHz sau in **pozitia 9** pentru Bluetooth, pentru a schimba modul de conectare.

7. Software Dedicat:

- Pentru o configurare avansata, descarcati si instalati software-ul dedicat pe care il puteti gasi pe pagina produsului:

M32: www.aqirys.com/product/m32

M60: www.aqirys.com/product/m60



Conectarea Mouse-ului Wireless

Wireless Mouse Connection

EN

1. Initializing the Mouse:

- Turn on the mouse by switching the button from **position 8 (OFF)** to **position 7 (2.4GHz)** or **position 9 (BT)** to select a connectivity mode.

2. Initial Connection:

- For the first use, you have the option to connect the mouse to both a Bluetooth device and the wireless transmitter included in the package.

3. Connecting to a Bluetooth Device:

- Ensure the Bluetooth function of your device is activated.
- Search for "AQIRYS M32 Mouse" or "AQIRYS M60 Mouse" in the list of nearby Bluetooth devices and select it to connect.
- If the connection is successful, the notification LED will illuminate blue.

4. Connecting to a New Bluetooth Device:

- Press and hold buttons 1, 2, and 3 simultaneously for 3 seconds to enter pairing mode.
- Open the Bluetooth settings on your device and search for "AQIRYS M32 Mouse" or "AQIRYS M60 Mouse" in the list of available devices.
- Select the mouse to connect. Once connected, the notification LED will illuminate blue.

5. Connecting via 2.4 GHz Mode:

- To establish a connection via 2.4 GHz mode, please connect the 2.4 GHz transmitter, located at the base of the M32 mouse, to an available USB 2.0 port on your device. You can also use the included dock to reduce the distance between the receiver and the mouse. For the M60 mouse, it is only necessary to connect the charging dock, which also acts as a transmitter.
- After making the connection, the 2.4 GHz transmitter will automatically enter Pairing mode.
- Following this action, the mouse and the 2.4 GHz transmitter will connect automatically, confirmed by the notification LED illuminating red.

6. Switching Connection Modes:

- Move the selector button on the mouse from the current position to **position 7** for a 2.4GHz connection or to **position 9** for Bluetooth to change the connection mode.

7. Dedicated Software:

For advanced configuration, download and install the dedicated software which can be found on the product page:

M32: www.aqirys.com/product/m32

M60: www.aqirys.com/product/m60



Utilizari Ulterioare

Subsequent Connections

RO

Dupa prima utilizare informatia de pairing va ramane salvata pe echipamentul dumnevoastra, iar conectorile ulterioare intre transmitator si mouse se vor face automat.

EN

After the first use, the pairing information will remain saved on your equipment, and the subsequent connections between the receiver and the mouse will be made automatically.

Activare/Dezactivare Transmitator

Wireless Receiver Power On/Off

RO

Transmitatorul este activat si dezactivat automat la conectarea si deconectarea sa la portul USB.

EN

The receiver is automatically turned on and off when connected and disconnected to the USB port.

Conectarea Mouse-ului cu fir

Wired Mouse Connection

RO

Conectati mouse-ul la cablul inclus in pachet; mouse-ul va intra automat in modul de functionare pe fir si, in acelasi timp, in modul de incarcare.

EN

Connect the mouse to the cable included in the package; the mouse will automatically enter wired mode and simultaneously begin charging.

Deconectare si Reconectare Automata

Auto Disconnect and Reconnect

RO

Daca mouse-ul nu este folosit, intra in modul de economisire energie dupa 30 de secunde. Daca ramane inactiv timp de 10 minute, intra in modul deep sleep. Pentru a-l reactiva, miscati mouse-ul sau apasati orice buton principal.

EN

If the mouse is not used, it enters energy-saving mode after 30 seconds. If it remains inactive for 10 minutes, it enters deep sleep mode. To reactivate it, move the mouse or press any main button.

**Iluminarea RGB Dock****Dock RGB Illumination****RO**

Pentru a schimba modul de iluminare al dock-ului de incarcare inclus in pachet apasati butonul aflat la baza dock-ului notat in prezentare cu numarul 16.

EN

To change the lighting mode of the charging dock included in the package, press the button located at the base of the dock, marked as **number 16** in the presentation.

Nivelul Bateriei**Battery Level****RO**

Nivelul bateriei poate fi verificat in software-ul dedicat.

EN

The battery level can be checked in the dedicated software.

Incarcarea Bateriei**Battery Charging****RO**

Pentru a incarca bateria mouse-ului, aveti doua optiuni disponibile. In primul mod, puteti lasa mouse-ul pe dock-ul de incarcare, insa nu puteti utiliza mouse-ul in timp ce acesta se incarca. Timpul aproximativ de incarcare de la 0 la 100% este de o ora si jumatate. In al doilea mod, puteti conecta mouse-ul in modul cu fir. Pentru aceasta, trebuie sa conectati mouse-ul la firul USB Type-C furnizat in pachet si sa introduceti firul intr-un port USB disponibil pe dispozitivul dvs. Timpul aproximativ de incarcare de la 0 la 100% este de o ora si jumatate.

EN

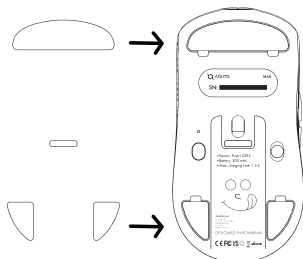
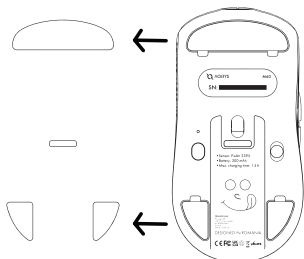
To charge the mouse battery, you have two options available. In the first method, you can place the mouse on the charging dock, but you cannot use the mouse while it is charging. The approximate charging time from 0 to 100% is one and a half hours. In the second method, you can connect the mouse in wired mode. To do this, you need to connect the mouse to the USB Type-C cable provided in the package and plug the cable into an available USB port on your device. The approximate charging time from 0 to 100% is one and a half hours.

Recomandari
Recommendation
RO

1. Inainte de prima utilizare recomandam rularea unui ciclu complet de incarcare a bateriei.
2. Pentru incarcarea bateriei puteti folosi incarcatoare 5V/1A sau 5V/2A; voltaje mai mari pot duce la defectarea produsului.
3. Daca au trecut mai mult de 3 luni de la ultima utilizare a mouse-ului va rugam sa il incarcati inainte de folosire.
4. Daca nu folositi mouse-ul pentru o perioada mai lunga de timp recomandam rularea unui ciclu complet de incarcare a bateriei o data la 3 luni pentru conservarea acesteia.

EN

1. Before the first use, we recommend running a complete battery charge cycle.
2. You can use 5V / 1A or 5V / 2A chargers to charge the battery; higher voltages can damage the product.
3. If more than 3 months have passed since the last use of the mouse, please charge the battery before use.
4. If you do not use the mouse for an extended time, we recommend running a complete charge cycle of the battery every 3 months to preserve it.

Inlocuirea patinelor
Skates replacement

RO

Pentru a inlocui patinele PTFE ale mouse-ului, trebuie sa indepartezi patinele vechi, sa cureti bine suprafata de reziduuri si murdarie cu alcool izopropilic, apoi sa aplici noile patine, asigurandu-te ca acestea sunt aliniate corect si presate ferm pentru aderenta.

EN

To replace the PTFE mouse feet, you need to remove the old feet, thoroughly clean the surface of any residue and dirt with isopropyl alcohol, then apply the new feet, ensuring they are properly aligned and pressed firmly for adherence.



Atentionari

Warnings

RO

1. Asigurati-va ca mouse-ul este utilizat in medii cu temperaturi normale si evitati expunerea directa la razele solare.
2. Nu expuneti mouse-ul la foc sau la obiecte fierbinti.
3. Mentineti mouse-ul uscat si evitati expunerea la medii umede. Nu scufundati mouse-ul in lichid.
4. Folositi doar cablul USB furnizat in pachet pentru incarcare. Nu incercati alte metode de incarcare.
5. Nu dezasamblati, reparati sau modificati mouse-ul.
6. In cazul deteriorarilor fizice, cum ar fi indoirea, deformarea sau coroziunea, contactati service-ul autorizat.
7. Daca intampinati alte probleme, cum ar fi degajarea unui miros anormal, o temperatura foarte ridicata in timpul utilizarii sau schimbari anormale de culoare sau forma, opriti imediat utilizarea mouse-ului si contactati service-ul autorizat.
8. Acest produs nu este o jucarie. Copiii cu varsta mai mica de 14 ani pot utiliza produsul sub supravegherea parintilor.

EN

1. Make sure the mouse is used in environments with normal temperatures and avoid direct exposure to sunlight.
2. Do not expose the mouse to fire or hot objects.
3. Keep the mouse dry and avoid exposure to humid environments. Do not submerge the mouse in liquid.
4. Use only the USB cable provided in the package for charging. Do not attempt other charging methods.
5. Do not disassemble, repair, or modify the mouse.
6. In case of physical damage, such as bending, deformation, or corrosion, contact the authorized service center.
7. If you encounter other issues, such as unusual odors, very high temperatures during use, or abnormal changes in color or shape, immediately stop using the mouse and contact the authorized service center.
8. This product is not a toy. Children under the age of 14 should use the product under parental supervision.

REGLEMENTARI**REGULATORY**

- Unauthorized repairs or disassembly of the product will void the warranty and may cause its damage.
- This product is safe and complies to EU requirements. (compliant with directive EMC (2014/30/EU))
- This product is manufactured conforming with the European RoHS standard. (compliant with directive RoHS 2.0 (2015/863/EU))
- Using the WEEE symbol (the crossed-out bin) indicates that the electrical and electronic equipment inside the package can be recycled. When recycling waste properly, you protect the environment and people health. Segregated household waste collection, aids recycle materials and components used for the production of this device. For detailed information about recycling, please contact your retailer or a local authority.
- The batteries must not be disposed of with your other household waste; treat them in compliance with the local regulations or contact your local city office, your household waste disposal service, or the shop where you purchased the product.
- Frequency bands and Powers (Headset and Transceiver)
 - a. Frequency band(s) in which the radio equipment operates:
 - WiFi: 2402 – 2480 MHz
 - b. Maximum radio-frequency power transmitted in the frequency band(s) in which the radio equipment operates:
 - GFSK, PI/4 DQPSK, 8DPSK: 10 dBm
- Reparatile neautorizate sau dezasamblarea produsului duc la anularea garantiei si pot cauza deteriorarea lui.
- Produsul este unul sigur, conform cu cerintele UE. (respecta directiva EMC (2014/30/EU))
- Acest produs este fabricat in concordanta cu standardul european RoHS. (respectiva directiva RoHS 2.0 (2015/863/EU))
- Utilizarea simbolului WEEE (pubelelataiata cu un X) indica faptul ca echipamentele electrice si electronice din interiorul ambalajului pot fi reciclate. Cand reciclezi deseurile in mod corect conform proiectei mediu inconjurator. Colectarea selectiva ajuta la reciclarea materialelor si componentelor folosite la fabricarea acestui echipament. Pentru informatii detaliate privind reciclarea, va rugam sa contactati vanzatorul sau autoritatile locale.
- Bateriile nu trebuie aruncate impreuna cu celelalte deseuri menajere; tratati-le in conformitate cu reglementarile locale sau contactati biroul local al orasului, serviciul de eliminare a deseurilor menajere sau magazinul de unde ati achizitionat produsul.
- Les réparations non autorisées ou le désassemblage du produit portent à l'annulation de la garantie et peuvent causer son endommagement.
- Le produit est sûr, conformément aux exigences de l'UE. (respecte la directive CEM (2014/30 / UE))
- Ce produit est fabriqué conformément à la norme européenne RoHS. (respecte la directive RoHS 2.0 (2015/863/EU))
- L'utilisation du symbole DEEE (poubelle barrée d'une croix) indique que les équipements électriques et électroniques de l'intérieur de l'emballage peuvent être recyclés. Lorsque vous recyclez correctement les déchets, vous protégez l'environnement. La collecte sélective aide au recyclage des matériaux et des composants utilisés à la fabrication de cet équipement. Pour obtenir des informations détaillées sur le recyclage, veuillez contacter le vendeur ou les autorités locales.
- Les piles ne doivent pas être jetées avec les autres déchets ménagers ; traitez-les conformément aux réglementations locales ou contactez votre mairie, votre service d'élimination des déchets ménagers ou le magasin où vous avez acheté le produit.
- Nicht autorisierte Reparaturen oder Demontagen des Produkts führen zur Löschung der Garantie und möglicherweise zur Beschädigung des Produktes.
- Das Produkt ist nach den Anforderungen der EU sicher. (EMV Verordnung (2014/30/UE))
- Dieses Produkt wird gemäß der europäischen RoHS-Norm hergestellt. (RoHS Verordnung 2.0 (2015/863/EU))
- Die Verwendung des WEEE-Symbols (mit einem X durchgestrichene Tonne) zeigt an, dass die elektrischen und elektronischen Geräte in der Verpackung recycelt werden können. Wenn Sie Abfälle ordnungsgemäß recyceln, tragen Sie zum Umweltschutz bei. Die Abfalltrennung hilft beim Recycling von Materialien und Bauteilen, die bei der Herstellung dieser Geräte verwendet werden. Ausführliche Informationen zum Recycling erhalten Sie von Ihrem Händler oder den örtlichen Behörden.
- Die Batterien dürfen nicht mit dem Hausmüll entsorgt werden, sondern müssen gemäß den örtlichen Vorschriften behandelt werden. Wenden Sie sich an Ihre Stadtverwaltung, Ihren Hausmüllentsorgungsdienst oder an das Geschäft, in dem Sie das Produkt gekauft haben.
- Le riparazioni non autorizzate o lo smontaggio del prodotto portano all'annullamento della garanzia e possono causare il suo danneggiamento
- Il prodotto è sicuro, in conformità ai requisiti dell'UE (rispetta la direttiva EMC (2014/30/UE))
- Questo prodotto è fabbricato in conformità alla norma europea RoHS. (rispetta la direttiva RoHS 2.0 (2015/863 / EU))
- L'uso del simbolo WEEE (cestino tagliato da una croce) indica che le apparecchiature elettriche ed elettroniche trovate all'interno della confezione possono essere riciclate. Quando riciclate i rifiuti in maniera adeguata, proteggete l'ambiente. La raccolta selettiva aiuta a riciclare i materiali e i componenti utilizzati per la fabbricazione di questa attrezzatura. Per informazioni dettagliate sul riciclaggio, contattare il venditore o le autorità locali.
- Le batterie non devono essere smaltite insieme agli altri rifiuti domestici; trattatele in conformità alle normative locali o contattate l'ufficio comunale, il servizio di smaltimento dei rifiuti domestici o il negozio dove avete acquistato il prodotto.
- Neoprávňné opravy alebo demontáž výrobku vedou ke zrušeniu záruky a môžu spôsobiť jeho poškodenie.
- Jedná sa o bezpečný výrobok v súlade s požiadavkami EÚ. (rešpektuje smernicu o EMC (2014/30/EU))
- Tento produkt je vyroben v súlade s evropskou normou RoHS. (je v súlade so smernicou RoHS 2.0 (2015/863/EU))
- Použití symbolu WEEE (odpadkový koš, který je přeškrtnutý s X) naznačuje, že elektrická a elektronická zařízení z vnitřku balení jsou vhodná k recyklaci. Pokud řádně recyklujete odpady, chráníte životní prostředí. Selektivní sběr pomáhá recyklovat materiály a komponenty používané při výrobě tohoto zařízení. Za podrobné informace o recyklaci, kontaktujte prosím prodejce nebo místní úřady.
- Baterie se nesmí likvidovat společně s ostatním domovním odpadem; nakládáje s nimi v souladu s místními předpisy nebo se obraťte na místní obecní úřad, službu likvidace domovního odpadu nebo na obchod, kde jste výrobek koupili.





REGLEMENTARI

REGULATORY

- Neoprávnéné opravy alebo demontáž výrobku vedú k zrušeniu záruky a môžu spôsobiť jeho poškodenie.
- Jedná sa o bezpečný výrobok v súlade s požiadavkami EÚ. (Rešpektujte smernicu o EMC (2014/30/EU))
- Tento produkt je vyrobený v súlade s európskou normou RoHS. (splňa smernicu RoHS 2.0 (2015/863 / EU))
- Použitie symbolu WEEE (odpadkový kôš, ktorý je preškrtnutý s X) naznačuje, že elektrické a elektronické zariadenia z vnútra balenia sú vhodné na recykláciu. Ak riadne recyklujete odpad, chránite životné prostredie. Selektívny zber pomáha recyklovať materiály a komponenty používané pri výrobe tohto zariadenia. Za ďalšie informácie o recyklácii, kontaktujte prosím predajcu alebo miestne úrady.
- Batérie sa nesmú likvidovať spolu s ostatným domovým odpadom; zaobchádzajte s nimi v súlade s miestnymi predpismi alebo sa obráťte na miestny mestský úrad, službu likvidácie domového odpadu alebo obchod, v ktorom ste výrobok zakúpili.
- Neovlášení popravci ili otvaranje proizvoda vodi do anuliranja garancije i mogu voditi do oštećenja uređaja.
- Proizvod jeste bezbedan, u skladu sa zahtevima EU. (poštujte direktivu EMC (2014/30/EU).
- Ovaj proizvod proizveden je u skladu sa evropskim standardom ROHS (odnosno direktiva ROHS 2.0. (2015/863/EU).
- Uprateba simbola WEEE (kanta isečena sa X) pokazuje činjenicu da sve električne i elektrotehničke opreme iz ambalaže mogu biti reciklirani. Kada vršite reciklažu otpada na odgovarajući način štitite životnu sredinu. Selektivna kolekcija pomaže u reciklažu materijala i komponenta upotrebljenih u proizvodnji opreme. Za detaljne informacije u odnosu na reciklažu, molimo vas da stupite u kontakt sa vašim proizvođačem ili lokalnim vlastima.
- Baterije se ne smeju odlagati sa ostalim kućnim otpadom; postupajte sa njima u skladu sa lokalnim propisima ili se obratite lokalnoj gradskoj kancelariji, službi za odlaganje kućnog otpada ili prodavnici u kojoj ste kupili proizvod.
- Μη εξουσιοδοτημένες επιδιορθώσεις ή αποσυμφορλόγηση του προϊόντος επιφέρουν ακύρωση της εγγύησης και μπορούν να προκαλέσουν την αλλοίωση του.
- Το προϊόν είναι ασφαλές, σε συμμόρφωση με τις απαιτήσεις της Ε.Ε. (συγκεκριμένα την οδηγία EMC (2014/30/EU)
- Αυτό το προϊόν κατασκευάζεται σύμφωνα με το ευρωπαϊκό πρότυπο RoHS. (συγκεκριμένα την οδηγία RoHS 2.0 (2015/863/EU).
- Η χρήση του συμβόλου WEEE (διαγραμμένος κάδος απορριμάτων με ένα X) υποδεικνύει πως ο ηλεκτρικός και ηλεκτρονικός εξοπλισμός του εσωτερικού του αμπαλάζ μπορούν να ανακυκλωθούν. Όταν ανακυκλώνεται τα απόβλητα τα αποβέβηται με αποβέβητο τρόπο προστατεύεται τον περιβάλλον. Για λεπτομερείς πληροφορίες σχετικά με την ανακύκλωση, παρακαλούμε να επικοινωνήσετε με τον πωλητή ή τις τοπικές αρχές.
- Οι μπαταρίες δεν πρέπει να απορρίπτονται μαζί με τα υπόλοιπα οικιακά απορρίμματα. Αντιμετωπίστε τις σύμφωνα με τους τοπικούς κανονισμούς ή επικοινωνήστε με το τοπικό δημοτικό γραφείο, την υπηρεσία απόρριψής οικιακών απορριμάτων ή το κατάστημα από το οποίο αγοράσατε το προϊόν.
- Неотризираните ремонтни работи или разглобяването на продукта водят до нищожество на гарацията и могат да доведат до неговата повреда.
- Продуктът е само една бройка, в съответствие с изискванията на ЕС. (Спазва разпоредженията на Директивата EMC (2014/30/EC))
- Този продукт е произведен в съответствие с европейския стандарт RoHS. (Съответстващата Директива RoHS 2.0 (2015/863/EC))
- Отбелязването на символа WEEE (зачеркната с X кофа за отпадъци) посочва факта, че електрическите и електронните устройства в опаковката могат да се рециклират. При надлежно рециклиране, опазвате околната среда. Разделното събиране на отпадъците помага за рециклирането на употребяваните материали и съставки за изработване на това устройство. За подробни информации относно рециклирането, молим Ви да се свържете с продавача на устройството или местните власти.
- Батериите не трябва да се изхвърлят заедно с другите битови отпадъци; третирайте ги в съответствие с местните разпоредби или се обърнете към местната общинска администрация, службата за изхвърляне на битови отпадъци или към магазина, в който сте закупили продукта.
- Nieautoryzowane naprawy lub demontaż produktu spowodują utratę gwarancji i mogą spowodować jego uszkodzenie.
- Produkt bezpieczny, zgodny z wymogami UE. (przestrzega dyrektywy EMC (2014/30 / UE))
- Ten produkt został wyprodukowany zgodnie z europejską normą RoHS. (odpowiednio dyrektywę RoHS 2.0 (2015/863 / UE)
- Użycie symbolu WEEE (kosz na śmieci z X) oznacza, że sprzęt elektryczny i elektroniczny wewnątrz opakowania można poddać recyklingowi. Poprzez prawidłowy recykling odpadów zmniejszisz ich szkodliwość. Selektywna zbiórka pomaga w recyklingu materiałów i komponentów użytych do produkcji tego sprzętu. Aby uzyskać szczegółowe informacje dotyczące recyklingu, skontaktuj się ze sprzedawcą lub lokalnymi władzami.
- Baterie nie mogą być wyrzucane z innymi odpadami domowymi; należy je traktować zgodnie z lokalnymi przepisami lub skontaktować się z lokalnym urzędem miasta, służbą utylizacji odpadów domowych lub sklepem, w którym zakupiono produkt.
- A termék nem szakszerű javítása vagy a termék alkatrészekre való bontása a garancia eltérését jelenti és ugyanakkor a termék sérülését is előidézheti.
- A termék biztonságos, gyártása EU-s normáknak megfelelő. (EMC/2014/30/EU)
- A termék gyártása az európai RoHS standard normatíváknak megfelelő (RoHS 2.0 (2015/863/EU)
- A WEEE szimbólum (áthúzott kuka szimbólum) jelzi, hogy a csomagban található elektromos és elektronikus alkatrészek újrahasznosíthatók. A hulladék megfelelő újrahasznosításával védi környezetét. A selektív hulladékgyűjtéssel hozzájárul ezen termék gyártásához használt anyagok és alkatrészek újrahasznosításához. Bővebb tájékoztatásért kérjük igényelje a részleteket a forgalmazótól vagy a helyhatósági szervek képviselőitől.
- Az akkumulátorokat nem szabad a többi háztartási hulladékkal együtt ártalmatlanítani; kezelje azokat a helyi előírásoknak megfelelően, vagy forduljon a helyi városi hivatalhoz, a háztartási hulladékkalkezelőhöz vagy ahhoz az üzlethez, ahol a terméket vásárolta.





SUPPORT

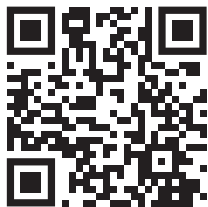
SUPPORT

RO Dacă întâmpinați erori sau orice alte probleme în utilizarea produsului nu ezitați să ne contactați.

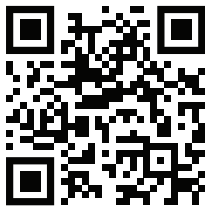
EN If you encounter errors or any other problems with the product don't hesitate to contact us.



support@aqirys.com



SCAN ME
(Support page)



SCAN ME
(Follow us)

© AQIRYS®. All rights reserved. AQIRYS® name and logo and all other related products, service names, and design marks are trademarks or registered trademarks of PC-coolers SRL. All other brand names and trademarks are the property of their respective owners. Specifications and design are subject to change without notice due to product improvements.